

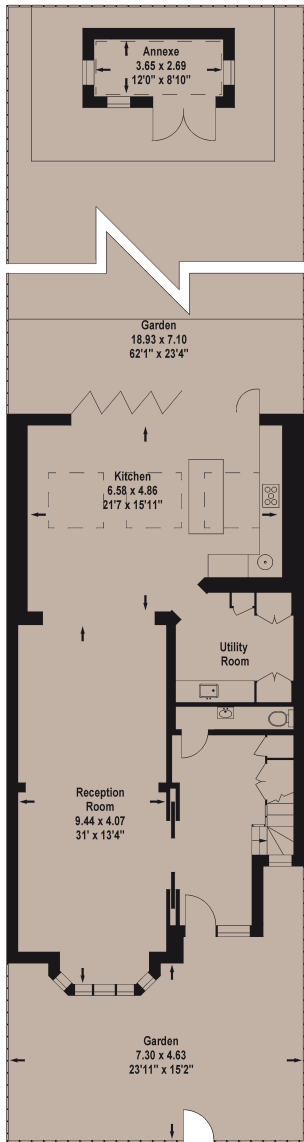
DOUBLE RECEPTION ROOM • KITCHEN/DINING ROOM • UTILITY ROOM • STUDIO • MASTER BEDROOM WITH EN SUITE BATHROOM • FOUR FURTHER BEDROOMS • TWO FURTHER BATHROOMS • SOUTH FACING GARDEN • SURROUND SOUND THROUGHOUT • ALARM AND INTERCOM SYSTEMS • LUTRON LIGHTING • UNDERFLOOR HEATING



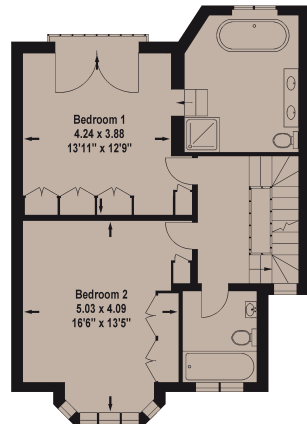
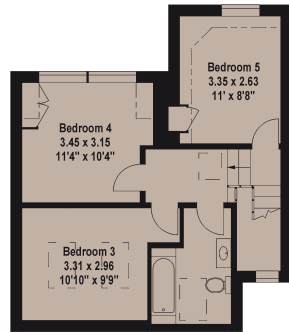
A RECENTLY REFURBISHED FIVE BEDROOM HOUSE WITH GARDEN AND STUDIO ON A POPULAR RESIDENTIAL ROAD CLOSE TO WANDSWORTH COMMON.

24 Loxley Road, London SW18





Gross internal area (approx) =
203 sq m (2,185 sq ft)



EPC

This substantial family home has been meticulously and comprehensively refurbished by the current owner to the most exacting standards to provide a beautiful and flexible family house. The spacious open plan double reception room which leads into the good sized kitchen lends itself to both entertaining and family life. The contemporary units in the kitchen include a central island and integrated Neff appliances as well as a Copie wine fridge. Off the kitchen area is a good sized utility room with an abundance of storage cupboards and folding glass doors open from the kitchen/dining room into the large south facing garden. The garden which boasts both decking and lawn benefits from a useful studio/playroom with electricity and heating.

On the first floor is a large master bedroom with French doors overlooking the garden and a luxuriously appointed en suite bathroom with a free standing bath and a shower. There is a further double bedroom and a bathroom on this level and three further bedrooms and a bathroom on the second floor.

Loxley Road is situated close to the green open spaces of Wandsworth Common and the excellent local shops on both Bellevue and Northcote Roads. There are many good schools in the area and transport connections are from either Earlsfield or Wandsworth Common mainline stations.



Viewing: Strictly by appointment with Savills.

Important Notice Savills, their clients and any joint agents give notice that: 1: They are not authorised to make or give any representations or warranties in relation to the property either here or elsewhere, either on their own behalf or on behalf of their client or otherwise. They assume no responsibility for any statement that may be made in these particulars. These particulars do not form part of any offer or contract and must not be relied upon as statements or representations of fact. 2: Any areas, measurements or distances are approximate. The text, photographs and plans are for guidance only and are not necessarily comprehensive. It should not be assumed that the property has all necessary planning, building regulation or other consents and Savills have not tested any services, equipment or facilities. Purchasers must satisfy themselves by inspection or otherwise. 11/08 236953

Brochure by [the capital group](#) Tel: 020-8671 5448

Savills Wandsworth
wandsworth@savills.com
020 8877 1222

Savills Clapham
clapham@savills.com
020 8673 4111

savills.co.uk

savills